

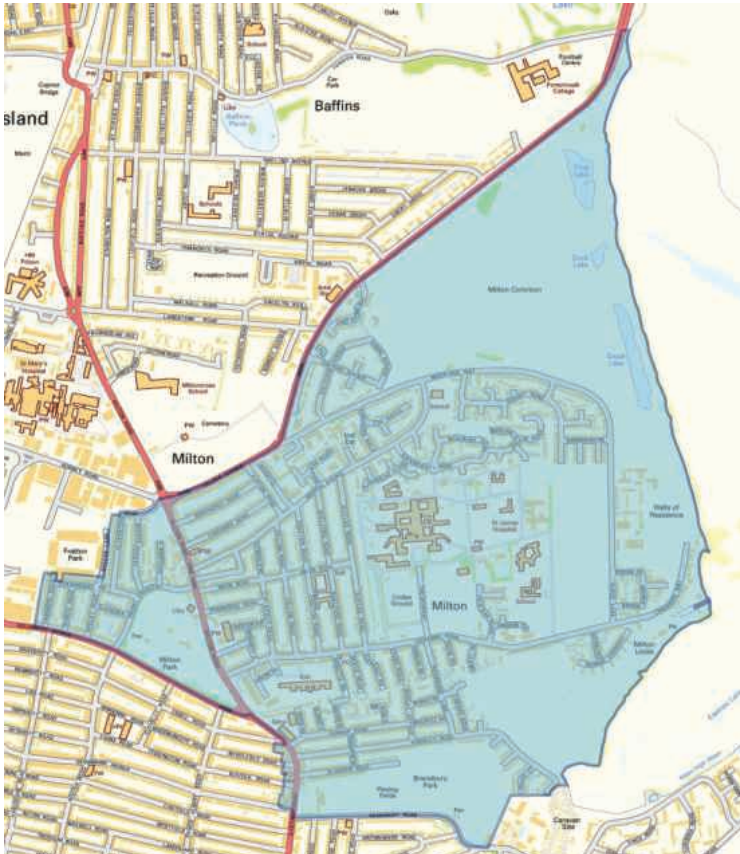
MILTON MATTERS

Milton Neighbourhood Forum

Issue No. 74

Milton Neighbourhood Plan Area

August 2022



NEXT OPEN FORUM AGENDA

WEDNESDAY 10 August 4-6pm

At Milton Village Hall Community Centre

Drop in between 4pm and 6pm to view the Milton Neighbourhood Plan and ask questions prior to your Referendum Vote on Thursday 18 August

OPEN FORUM MINUTES 16 March 2022

The meeting was held at St James Church. Chair, opened the meeting at 1900 explaining the change of venue from the Mary Rose School and Langstone Church due to restrictions and ownership respectively. She thanked the Church for their help and support. Housekeeping and Safety measures were announced including Covid Precautions in ventilation, cleanliness and distancing.

Previous Meeting Minutes: Some copies of Milton Matters were not delivered within the timescales prior to tonight's meeting.

Janice spoke about the need for additional volunteers to deliver the Milton Matters and a form circulated for anyone who would be willing to join.

AGM: Janice announced that the AGM will be later this year and if anybody would like to join, please come forward.

New pool for Bransbury Park Meeting to be held Tuesday 22nd March 2022 from 4:30 p.m. - 7:30 p.m. at Eastney Community Centre –

A fun event was being staged to meet developers, design team and look at the plans, get involved in a community art project. Families were welcome so additional activities have been included by Groundlings Theatre, Switched On Portsmouth and craft stalls etc.

Greening Milton Market

Portsmouth City Council are currently looking into improvements to Milton Market to work with the greening

structure deal, linking Bransbury Park with Milton Park to create a really nice public space environment for people to walk, share the area, to get to school, shops or just visiting the parks. They will also be looking at decluttering this site and removing the guard rails at Devonshire Avenue and replacing with a planter in the future.

They will be looking at creating continuous footways so that there will be one level walking across junctions. This will aid the new Highway Code, hence traffic will have to slow down and the junctions will be narrower.

Cycle parking at Essex Road junction
Brick planter behind the bus stop at Bransbury Park to be removed and be replaced with benching. They have spoken to the landscaping team and may create another park entrance

Reference was made to Clive Road and Fawcett Road areas where similar projects have been done. It gives priority to pedestrians. It was also noted that the land at the end of Essex Road junction is privately owned but BD is in negotiations with the landowners.

Clean Air Zone (CAZ)

Cllr Lynne Stagg updated the meeting on the CAZ aimed to encourage people to use the park and ride scheme, ways to enter the city centre and preventative measures. Lyn discussed the clean air initiatives and ways of tackling pollution. The CAZ was agreed as a central government initiative - outcomes will be time related and analysed to see what reductions have been made and whether further initiatives need to put in place. This will be reviewed in two years' time.

OPEN FORUM 16 March 22 cont..

Lynne's added that Portsmouth and Hampshire would be **awarded £6.5 million for zero emission buses**. The plan aims to create more frequent and reliable services on a better fleet of buses, improve the integration with other ways of travelling, develop ticketing options to make travel simpler, and provide more accessible information for existing and potential passengers. Examples of the changes needed include buses running from 4.30am to 11pm to benefit shift workers, buses operating until 1am on Fridays and Saturdays to support the night-time economy, and additional services operating in parts of the city that don't currently have a bus service or have a poor one.

Official VOI Scooters

Cllr Lynne Stagg updated us on the scooters for hire around the city saying there will be additional collection points. The one proposed for Moorings Way area, will not be included due to objections.

Carbon Budget

Cllr Kimberley Barrett explained her portfolio on climate change and environment. In 2018 a corporate decision was taken to make a cleaner, safer, and greener city for everyone to live in and enjoy. In 2019 the council declared a climate emergency for the city and since then we have been starting to progress towards our net zero target which was set very ambitiously for 2030. The plan sets a carbon baseline and action in the City working with the Climate Action Board, etc..

Achievements so far - upgrading some streetlights, to save 150 tons of carbon and an annual saving of £130000; PV installations at the Port, to improve air quality nearby. £15.2 million will go towards domestic properties up to £25,000 per home to install solar panels, air source heat pump, loft installation, cavity wall installation and low energy light bulbs. 2600 solar panels at the port will give 98% of the port's energy together with a 1.5-megawatt battery which will make the port independent and may even be sell power back to the grid. Energy efficient measures are being designed into new build for PCC..

Application to develop St James Plan - Phase 2 – deferred

Rod Bailey explained that in January 2022 the planning committee didn't determine the application from PJ Livesey due to lack of affordable housing within the scheme, loss of too many trees, the design of the new homes and the need for a further review of highway capacity.

The scheme will be reconsidered after the Election but has been published so that the public can object by 25 March.

The Neighbourhood Planning Forum remains concerned at many aspects of the proposals and will put these into the Planners. The level of traffic Moorings Way junction can cope with and the proposals to 'shift the stop line forward' as this takes away the turning circle for lorries and busses off Eastern Road. Also the idea of traffic lights at the end of Locksway Road where already there is heavy traffic, would create further tailbacks into the rest of Milton and Baffins (Prison traffic still to be absorbed) Attendees were asked to comment via the following email: planningreps@portsmouthcc.gov.uk

WHAT IS A NEIGHBOURHOOD PLAN?

The Milton Neighbourhood Plan is a community Plan that will help guide Portsmouth City Council with any future planning decisions. It sets out how the neighbourhood should be developed over the next 15 years. It includes guidance on green space, housing, community facilities, retail and employment sites, and transport. At the heart of the Plan is the goal of sustainable development, so that the natural environment is protected and enhanced and residents' quality of life and health and wellbeing are improved.

How was the Plan developed?

The Plan was developed by and with the community through the Milton Neighbourhood Planning Forum. An initial survey in 2015, found that residents' top concerns about new development were loss of green space and unsustainability given existing traffic congestion and air pollution.

Following a second stage of Consultation, the Plan was reviewed by an independent Planning Examiner and passed subject to modifications. The team was complimented on producing a well-evidenced and focused Plan.

What happens next?

The Plan now returns to you! Residents of Milton will be asked to vote in a referendum on whether they wish the Council to adopt the Plan or not by asking a single “yes” or “no” question: **“Do you want Portsmouth City Council to use the Neighbourhood Plan for Milton to help decide planning applications in the Neighbourhood area?”**

If a majority of the votes are “yes”, then the Plan will become an essential part of Portsmouth City Council's decision making process for future planning proposals.

How do I take part in the referendum?

The referendum is on **18th August, 2022**. You will be sent a ballot card in the post.

The Polling Stations will open between **7.00 am and 10.00 pm**: at

- **Good Companion, Public House, Eastern Road**
- **Milton United Reform Church, 239 Milton Road**
- **St James' Church, 285 Milton Road**
- **Eastney Community Centre, Bransbury Park**

The vote will be counted and witnessed the following morning at the Civic Offices.

WHAT DOES THE PLAN INCLUDE?

Milton Neighbourhood Plan Green Space Map



The Examiner approved the designation of ten local green spaces (see above). This would strengthen any protection that is currently afforded by the city-wide Portsmouth Plan. These designated green spaces include the Brent Geese feeding areas at the north of the University playing fields; the harbour-side field on the Campus; the Locks Nature Reserve; Locksway Road Allotments; the Cricket Pitch and Matron's Walk in St James' Hospital and St James' Green; Bransbury and Milton Parks; and Milton Common.



Frog Lake Milton Common

WHAT DOES THE PLAN INCLUDE? *Cont.*

It would ensure St James' Hospital and Chapel are properly set in their parkland landscape. It proposes a mix of healthcare and other community uses; housing; flats and/or apartments all appropriately designed to preserve the heritage features and views of the Grade II Listed Hospital and Chapel. The size of new development would need to be considered against the capacity of the surrounding highway network



St James Hospital



Brent Geese

The Plan's policy for the vacated space at Langstone Campus could enable Milton Common to be extended and/or provide sports pitches. Either option would enhance Portsmouth's eastern seaboard. The Furze Lane cycle and bus-only route would be preserved to reinforce the Plan's sustainable transport objectives. The Brent Geese feeding areas, essential for The Solent population of these migrant birds, would also be secured.



St James' Chapel

The Plan proposes keeping existing retail and employment areas as well as protecting existing community facilities such as schools, nurseries, churches, pubs and community centres. It encourages new facilities such as St James' Chapel and retains the option for a new school on Langstone Campus

ANY QUESTIONS ON THE PLAN?

The Plan has been assessed for any environmental impacts (called a Strategic Environmental Appraisal). The appraisal concluded that there would be long-term significant positive effects in terms of health and well-being, as well as positive outcomes from the proposed improvements to biodiversity, heritage and landscape.

The Plan and all the associated documents, including the Examiner's Report, the Environmental Appraisal and Habitats Regulations Assessment, can be viewed at:

<https://www.portsmouth.gov.uk/services/development-and-planning/planning-policy/neighbourhood-plans>

and

<http://miltonplan.org.uk/>

Members of the Planning Forum will be available to discuss any issues or queries you may have at Milton Village Hall between 4pm and 6.00pm on Wednesday 10th August.

On behalf of the Neighbourhood Planning Forum and the Neighbourhood Forum, we hope you will find the time to vote favourably for the incorporation of this Plan into the City Council's decision making process on 18 August 2022.

Rod Bailey
Chair Milton Neighbourhood
Planning Forum

Janice Burkinshaw
Chair Milton Neighbourhood Forum

Read Ian Clark's account on p.15 of how the Neighbourhood Plan progressed over the past 7 years and what it meant to him as a member of the Planning Forum.

Milton is fortunate to have had the dedication of a team prepared to put in the huge amount of work required to prepare a plan and make it fit the legislation. A plan for a separate area within an urban setting is unusual. It demonstrates how keen we all are in Milton, to do our best to keep the area protected and vibrant. We all enjoy it so much!
Chair

Milton Village Community Association

Milton Village Hall, 182 Milton Road, Southsea, Hants, PO4 8PR
 Tel. 023 9287 3788 Email: miltonvillagehall@gmail.com

Office: 9.30am-12.30pm Mon-Fri Website:
www.miltonvillagehall.co.uk

MEMBERSHIP 2022-2023

If you receive Milton Matters, you can become a member of our Association!

You do not have to be a member to enjoy any of the activities and trips but if you do join, you can book on to trips & events at members' prices at any time! (Subject to availability)

Our new membership year starts 1st September and new and renewal membership application forms will be available from mid August. The membership fee is just £10 per adult/senior per year (children are FREE on a family membership) and entitles you to discounts on private hall hire, priority booking & cheaper prices for trips/events!

We currently have spaces on the following new trips that have just been released:

Prices in brackets for non-members

| | |
|---|---|
| <p>London Day Trip – Do as you please Wed 24 Aug (School hols) Adult £20 (£25) Child £10 (£15)</p> | <p>Visit to Houses of Parliament!! We've got 2 dates – Fri 2 & Sat 24 Sep Adult £43 (£46) Child £33 (£36)</p> |
| <p>Strictly adults only! Book of Mormon Hilarious London Show Fri 16 Sep matinee Members £65 (£69)</p> | <p>Moulin Rouge London Show Wed 23 Nov Evening SOLD OUT BUT PLEASE REGISTER INTEREST FOR CANCELLATIONS OR 2ND DATE!</p> |

And a couple of the new trips coming out in the next programme!

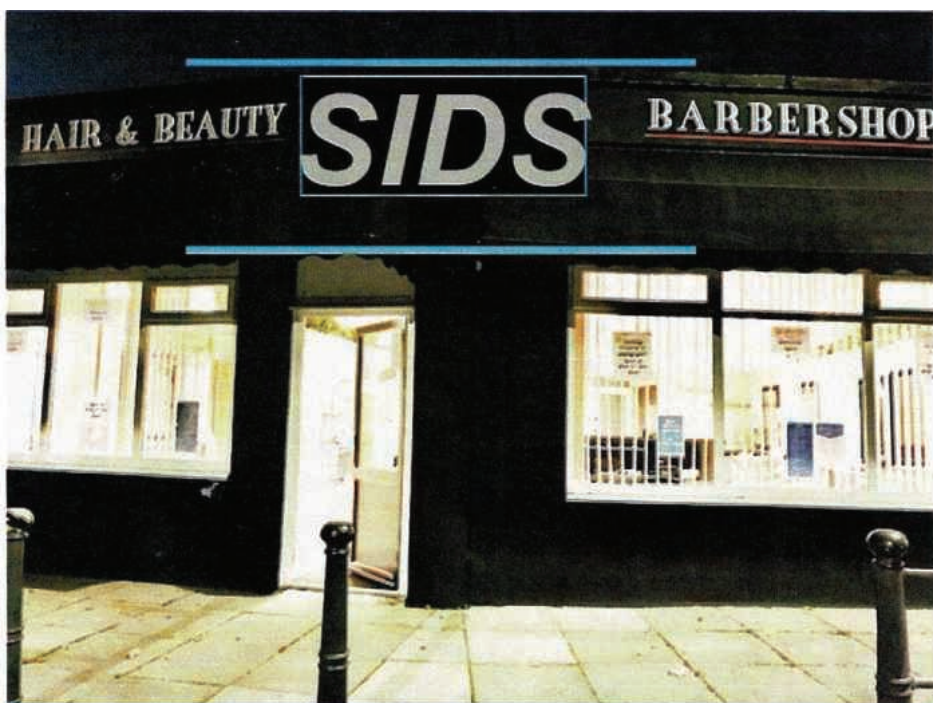
| | | |
|--|--|--|
| Fantastic Longleat Christmas Lights | Charlie & The Chocolate Factory | Rouen & Honfleur + Monet's Garden |
|--|--|--|

CURRENT REGULAR ACTIVITIES at Milton Village Hall

| Monday | Tuesday | Wednesday | Thursday | Friday | Sat | Sun |
|----------------------|----------------------------|-------------------------------------|-----------------------|--------------|--------|-----|
| Music Mad | Scrapbooking (m) | Music Mad | Weight Watchers | Yoga | Bounce | AA |
| Curling | Pilates | Bingo n Brunch (m) | Baby Ballet | Cribbage | | |
| Children's Ballet | Adult Ballet | 50+ Keep Fit | Home Ed Crafts | Line Dancing | | |
| Dog & Puppy Training | Cribbage | Let's Bounce Back (PCC Weight Loss) | Bereavement Group (m) | Yoga | | |
| Tap Dancing | Beetle Drive (m) | Breve Easy Community Choir | Children's Ballet | | | |
| | Ideal Fitness | Dog & Puppy Training | Pilates | | | |
| | Community Sew & Crafts (m) | Bounce (Trampet Fitness) | Bounce Trampets | | | |
| | Yoga | | Line Dancing | | | |



Like us on Facebook for latest news & info! Registered Charity



OPEN : Mon to Fri 8am until 6pm

Sat 8am until 4.30pm

Traditional to Modern styles

Any colour brand on request

Latest hair treatments Olaplex, Mon Platin

9/11 Locksway Road Milton PO4 8JN
02392 291150



Willows Wheels

PRIVATE HIRE - PRE-BOOKINGS ONLY

07746 395443

willowswheels@gmail.com

Independent Private Hire Company

Friendly family run business

Do you need transport to the Airport , Docks and Long distance?

Please call or email for a quote

ping zone
PC Repairs & Upgrades



www.pingzone.co.uk



PC and Laptop repairs



Is your machine running slow?



Mobile phone and tablet screen repairs



Upgrades



Networking



Virus and Malware protection

Please contact Dave if you need any help.



02392 215 999



07944 917 293



support@pingzone.co.uk



14 Tern Walk, Milton, PO4 8QG - by appointment please

ADMIRAL JELlicOE HOUSE

Having suffered the sound of the continuous piling and witnessed the gradual creation of Admiral Jellicoe House, in Locksway Road, I was keen to see inside this purpose-built residential care home for Royal Naval and Royal Marines veterans and their dependents. Local residents are encouraged to enjoy a scheduled visit to compensate for any inconvenience caused by the building works. I made an appointment, with Gill Irish, the Manager, and was accompanied by my friend, and Chair of Milton Neighbourhood Forum, Janice Burkinshaw. We were both very much impressed by the beautiful interior décor and tasteful furnishings in the comfortable lounges and dining rooms on each of the three floors accessible by lifts. Each landing displays a different theme. There are 66 luxury en-suite rooms (each with a television); a cinema room; hair salon; sun lounge and bar. Residents have a choice of formal or informal dining.

A balcony overlooks the St James cricket field but, disappointingly, the perimeter fence is now adorned with plastic sheeting which impedes the view of play. Evidently, the mobile cricket sight screen can no longer be utilised because the wheels cannot be accommodated within the boundary.

It was lovely to see the majestic copper beech tree on the site, still thriving and viewable from the landing window.

It was good to see evidence of community cohesion with the students of Mary Rose Academy enjoying their sports day on the cricket field.

Long may this continue! Admiral Jellicoe House is run by the Royal Naval Benevolent Trust (RNBT) and offers resident-centred care and dedicated dementia support. It's of such high quality that I'd like to book a room for 2042 but, unfortunately, I don't have any naval connections! *Angela Barnes*



PICNIC ON THE GREEN RETURNS!





PICNIC ON THE GREEN RETURNS!

Didn't we all have a splendid day! It was great to be back in our old 'home' at St James but how the trees have grown!

Everyone worked so hard to make the day such a success and it was thanks to organiser Dominic's driving determination that it went like clockwork. The Picnic is held on City Council land which is Public Open Space but permission is required to hold the event every year with specific requirements such as risk assessments having to be completed, insurance in place, qualified first aider on duty, no alcohol on site, a professional vet present where dogs are involved, etc. etc. Fortunately Vets4Pets are very helpful in taking charge of the dog show and meeting this requirement.

The event does not aim to make a profit – just try to cover the expenditure. We have to pay for the hire of the tables and chairs for the refreshment area and these alone cost around £700 for the day. Fortunately we were given a grant back in 2020 by the Lord Mayor's Appeal fund (Cllr. David Fuller) to cover this and the First Aid.

The refreshments and tombola are our main source of income so that the picnic continues from year to year. There are costs to be met for equipment. Our gazebos need renewal from time to time and a second gas boiler made life a great deal easier this year so that continuous teas and coffees were available. The charges to local residents are kept as low as possible so our income on bouncy castles is aimed at just covering the hire cost. Punch and Judy and musicians also have to be paid. We aim to keep the Picnic as a free- to- enter event so long as we can but this depends upon a great personal effort in making cakes to sell and donations of prizes for the tombola. We have managed it so far! It was great to see the youngsters enjoy the races again.

We had to replace our shed and here are some of the team who help shift equipment around each year.



All our committee are involved together with members of their families. The day would not happen without them but it is a joy to see so many local people come along. Thank you everyone for your support. *Janice Burkinshaw*

PREPARING THE MILTON NEIGHBOURHOOD PLAN

The personal recollections of a planning forum member of the 7 years it has taken, it has been a rewarding experience, at times, frustrating and annoying, with moments of “what am I doing here”. It is not intended to be a factual record. I believe we have produced a sustainable plan for the next 15 years for Milton. All the actual plan documents are available to read on www.miltonplan.org.uk

The Neighbourhood Plan project came about from the proposal in 2013 by Portsmouth City Council (PCC) to allocate St James' Hospital and Langstone Campus for 545 new homes.

Throughout the period, meetings have been held with, PCC, NHS Property Services, Clinical Commissioning Group, University, both Portsmouth MPs, St James developers, Solent Health Trust, English Heritage, Historic England, Highways Authority, Natural England, South West Water to name a few.

We kept in touch with residents using Keep Milton Green, Milton Matters, Open Forums and The News

12 February 2015

First committee meeting. Election of members. Consideration of the Boundaries of the Proposed Planning Constitution, Community involvement and setting up a MNPF website. To draft a Vision statement. Application for Designation as a Neighbourhood Planning Forum. Investigate Funding Streams. Identify stakeholders.

June 2015

Picnic on the Green - Trial residents community engagement questionnaire.

March 2015 to March 2019

Identifying policies, developing a vision and aims, building an evidence base, publicity and community engagement, writing a draft plan.

September 2015 to February 2016

4380 questionnaires seeking the views of Milton residents and businesses distributed with Milton Matters. Posters displayed on the Milton Neighbourhood Forum notice boards and elsewhere. Article drafted for The News. An option was to complete the questionnaire online at www.miltonplan.org.uk 559 responses were received.

| |
|---|
| 5 April 2016 |
| Open Day in Milton Village Hall to present results of Community survey, display photos and maps, white boards “post your good ideas” available. Over 200 attended. |
| June 2016 |
| Picnic on the Green. We had a stall showing again the results of Community survey, display photos and maps, comment sheets were available to use. |
| August 2017 |
| Housing Needs Assessment (HNA) produced to help understand the type, tenure and quantity of housing needed to inform neighbourhood plan policies. |
| July 2017 |
| Draft Habitants Regulations Assessment (HRA) produced. The object of the HRA was to Identify any aspects of the Neighbourhood Plan that would cause a likely significant effect on Special Areas of Conservation (SACs), Special Protection Areas (SPAs), and Ramsar sites, and to advise on appropriate policy for delivering mitigation where such effects were identified. |
| March 2018 |
| HRA amended following PCC comments (European Court of Justice ruling) |
| April – May 2019 |
| Regulation 14, a 6-week pre-submission consultation. This includes publicising the draft plan to people who live, work or run businesses in the area to allow anyone to comment on any aspect of the plan and for modifications to be made, if necessary. |
| June 2019 |
| Final QC report on Villas. PCC confirm Villas are curtilage listed overturning demolition ruling |
| June 2019 – July 2021 |
| Modify plan to incorporate Reg 14 comments, prepare necessary documents for final submission |
| April 2020 |
| Final HRA produced |
| May 2020 |
| Strategic Environmental Assessment (SEA) produced. The purpose of the assessment is to avoid adverse environmental and socio-economic effects through the Neighbourhood Plan, and identify opportunities to improve the environmental quality of the area covered by the Neighbourhood Plan and the quality of life of residents. |

27 August 2020

Our 5 years as a Forum was up, we had to reapply for the Milton Neighbourhood Planning Forum to remain a qualifying body.

January 2021

Consultation Statement produced. A summary of previous community engagement and consultation that has been undertaken.

May 2021

Basic Conditions Statement produced. It must -

- Have regard to national policies and advice, such as the National Planning Policy Framework
- Contribute to the achievement of sustainable development
- Be in general conformity with the strategic policies in the development plan for the area
- Be compatible with European obligations and human rights requirements

September/October 2021

Regulation 16 - Submission of the completed plan to the local planning authority (PCC)

The plan was publicised by the local planning authority for a 6-week period. Any representations received were passed to the independent examiner for consideration

January 2022

Examination by an independent approved examiner

April 2022

Local Green Space / Open Space policy hearing by examiner

May 2022

Examiners report recommending proceed to referendum

21 June 2022

Plan endorsed by PCC cabinet

10 August 2022

Drop-in session for residents to understand the plan

18 August 2022

Referendum - If more than 50% vote 'yes', then the neighbourhood plan becomes part of the statutory development plan for the area.

19 August 2022

One of the official observers for counting the vote. *Ian Clark*

YOUR LOCAL FAMILY LAW SOLICITOR



RUTHERFORD SOLICITORS



Specialist Quality Mark holder

257 MILTON ROAD
PORTSMOUTH PO4 8PQ
Tel: 02392 735700

www.rutherfordsolicitors.co.uk

WE SPECIALISE IN FAMILY LAW

LEGAL AID ADVICE AND HELP IS AVAILABLE IN FAMILY LAW INCLUDING CHILDREN, CARE PROCEEDINGS, DOMESTIC VIOLENCE, DIVORCE, FINANCIAL MATTERS ETC.

THEREFORE IF YOU ARE ELIGIBLE YOU MAY QUALIFY FOR FREE LEGAL ADVICE.

STRAIGHTFORWARD WILLS AND LASTING POWER OF ATTORNEYS (T&C's apply)

Straightforward Individual Will: **£165.00 + VAT**

Straightforward Joint/Mirror Will **£265.00 + VAT**

Lasting Power of Attorney - **£180 + VAT** (excludes registration and OPG fee) – (usual price £350 + VAT) –

Please telephone us or call in to the office for further details

GUIDE TO LOCAL SERVICES IN MILTON



THE JOHN DOYLE PARTNERSHIP

Accountancy Services
Marian House, 62-64 Priory Crescent. Tel/Fax:023 9261 0450
Payroll and accountancy services for small businesses, sole traders, partnerships and limited companies.

Contact Kevin Doyle

www.thejohndoylepartnership.com e-mail
info@thejohndoylepartnership.com



BJM UPHOLSTERY LTD 107 Guildford Rd, Fratton

Tel: 02392 822642

Foam cut to size, cushions filled, also re-upholstery



**MILTON AND EASTNEY ALLOTMENT ASSOCIATION
ANNUAL SUMMER SHOW
Sunday 21 AUGUST**

**New members entries very welcome
Show schedules available from the shop**



BEN DOWLING

A key community figure left us in May after Council elections. Ben had been a member of the Neighbourhood Forum since 2010 when he joined our committee whilst still at Milton Cross School aged just 15. He has made a great contribution to our work ever since. His involvement in local affairs prompted him to stand for election to the Council in 2014. He was successful and represented the Milton Ward throughout. We all relied on Ben to do his utmost to resolve issues and problems. He has suggested many community schemes and brought them to completion. We wish him and his fiancé Roxana the very best for the future. Thank you Ben for the improvements you have made in this part of the city.

GUIDE TO LOCAL SERVICES IN MILTON

DIPEST PEST CONTROL LIMITED

All types of pest eliminated – No more than £50 Mr Simon
Houghton MD, MRIPH, IMIFM, MBPR(Pest Control)
Field Biologist
Hope House, 19 Revenge Close, Southsea, PO4 8YE
PHONE (023)9235 8692 MOBILE 07748 791 248
dipestpestcontrol@ntlworld.com



MOTOTECH – Unit 8, Warren Avenue Industrial Estate
For all your mechanical requirements MOT's and recoveries
available. Tel: **023 9287 4784**

Specialists in Performance and Luxury Cars

Home based brow and beauty business in Milton. Services include microblading, henna brows, HD brows, facial waxing, brow/lash tinting, lash lift and tint, dermaplaning, spa facials and Indian head massage.



Offering 10% off your first appointment when quoting this advert.
Pages on both Facebook and Instagram @thebrowartistsouthsea or call
to book an appointment with Vicky on 07715986948

WANT TO ADVERTISE IN MILTON MATTERS?

ADVERTISING RATES Full page £100. Half page £50.

Directory entry £15

Contact Pam Pritchard (07837 929385)

pampritchard1@outlook.com

ADVERTISING COPY IN WORD OR JPEG ONLY PLEASE

SCHOOL STREETS

Daisy Letter from Meon Infants School with Stompa

On 4 July Meon Infant and Junior Schools began trialling the School Streets initiative which is a joint venture between Portsmouth City Council and Sustrans. School Streets are already in operation for St Jude's School and Brambles Nursery/Goldsmith Infant School. The aim is to limit the amount of non-essential traffic from entering the sections of Shelford and Crofton Roads, between Meon Road and Locksway Road, during school drop-off and pick-up times, ie 8.15 - 9.00am and 2.40 - 3.30pm. Parents, children, staff and visitors are encouraged to walk or cycle resulting in a safer, healthier environment



which helps to develop cleaner air and reduce traffic congestion. Access is permissible to blue badge holders; emergency services; residents and essential deliveries during closure times. Please bear this in mind when you are planning your journeys at these times. Local councillors and civic dignitaries plus Stompa and PFC's Nelson were present to mark this new School Street. Currently the barriers are being 'manned' by Junior School staff, but continuation of the scheme is dependent upon volunteers. If you feel you could fulfil this role, details can be found on #SchoolStreets or enquire at the schools.

Angela Barnes.

ESTATE  AGENTS

LAWSON ROSE

**PORTSMOUTH & SOUTHSEA'S AWARD
WINNING ESTATE AGENT**

SALES & LETTINGS

131 Winter Road, Southsea, P04 8DS

02392 367 779

contactus@lawsonrose.com

lettings@lawsonrose.com

www.LawsonRose.com



ANGUS TREE SERVICES LTD

OUR RANGE OF COMMERCIAL TREE SERVICES INCLUDE:

| | |
|-----------------|-------------------------------|
| Tree felling | Hedge trimming |
| Tree thinning | Hedge reduction |
| Limb removal | Deadwood removal |
| Site clearance | Regular tree/site maintenance |
| Stump removal | Hazardous tree/limb removal |
| Crown thinning | Emergency call-out service |
| Crown reduction | |

We offer a friendly and professional service covering all aspects of tree care. All work BS3998 2010 Standard, full trade waste license, fully insured for £10 million, all staff are DBS checked.

07775 764 669

@angustreeservices

www.angustreeservices.co.uk

bob@angustreeservices.co.uk

CALL FOR A FREE QUOTE

MILTON NEIGHBOURHOOD FORUM COMMITTEE

MiltonNForum@aol.com

| | |
|---|------------------|
| Janice Burkinshaw – Chair | Dominic Goodyear |
| Dave Willcox – Vice Chair | Viola Langley |
| Pam Pritchard – Treasurer | Martin Lock |
| Rod Bailey Milton Neighbourhood Plan Chair | Lyn Mills |
| Jenny Bellinger – Secretary | Peter Mills |
| Dan Brooks | Reg Puntis |

Ian Clark

Rajah Ghosh

Paul Hinchliffe

Paula Savage

Martin Silman

Patrick O'Hara

Ward Councillors – Milton

Cllr Gerald Vernon-Jackson

39 Lindley Ave., Southsea
(02302 834551)

geraldvj@gmail.com

Cllr Kimberley Barratt

C/o Members' Services Floor 3,
Civic Offices, Guildhall Sq.,
PO1 2AL (07825858324)

[cllr.kimberly.barrett@](mailto:cllr.kimberly.barrett@portsmouthcc.gov.uk)

portsmouthcc.gov.uk

Cllr. Steve Pitt

C/o Members' Services as above (07826 534614)

(023 9283 4936/ 07966 763635) Cllr.Abdul.Kadir@portsmouthcc.gov.uk

Cllr.Steve.Pitt@portsmouthcc.gov.uk

Ward Councillors - Baffins

Cllr Lynne Stagg

71 Highgate Rd., Copnor
(07740 680612)

lynne.stagg29@gmail.com

Cllr. Darren Sanders

Flat 6, 92 Victoria Road North
Southsea, PO5 1QE
(07740 680612)

darrensanders59@gmail.com

Cllr. Abdul Kadir

c/o Members Services Floor 3

[Neighbourhood Planning Forum website http://miltonplan.org.uk](http://miltonplan.org.uk)

The Neighbourhood Forum is
responsible for editorial content, design and
distribution of Milton Matters.

Printed by Holbrooks Printers
Norway Road, Portsmouth